



**Levi, Jack and Hinaa are coming to
The Redeemer Church of England
Primary School**



What makes The Redeemer Church of England Primary School such a special place?



When you start school with us, you and your family will join our wonderful school family.

We all take care of each other and are always kind.

Every day, we meet together for daily worship. You will also meet for Celebration Worship on Fridays and for special festivals such as Easter and Christmas.

Today, Hinaa is reading the school vision prayer and Levi is lighting the candle.

2

What festivals do you celebrate?

What happens when I arrive at school?

When you get to school, you will come into the reception playground.

Your teacher will be waiting there and will invite you into the classroom.



You will hang up your coat, like Jack is doing. You will put your water bottle and book bag away.

Then you will go and sit on the carpet, ready to start your day in school.

3

Are you looking forward to your first day at school?

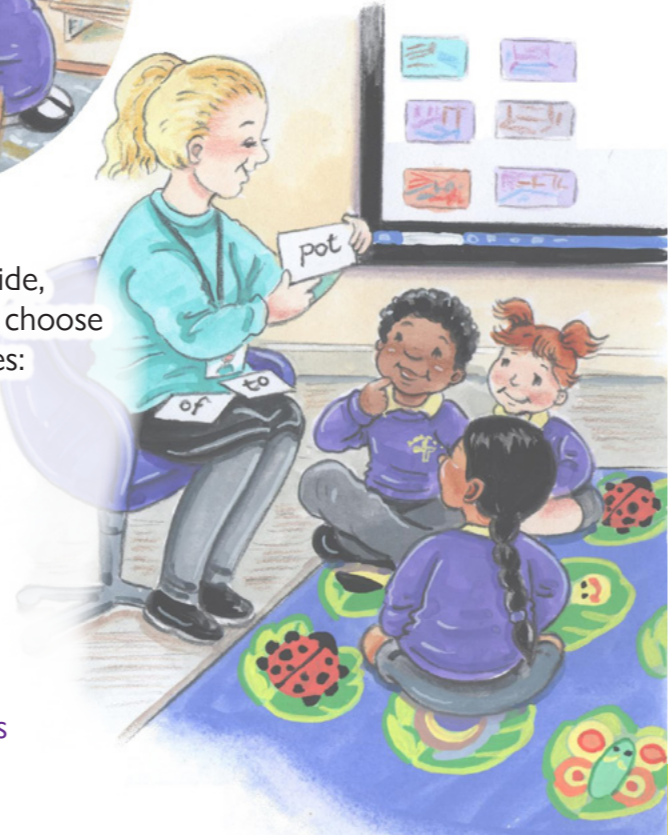
What will I do at school?

You will start the day with phonics, when your teacher will help you to learn to read and write. You will do lots of other learning activities with your teacher and friends. You will quickly make friends as you play in the different areas of your classroom.



When you play inside, you will be able to choose from these activities:

- role play
- home corner
- construction
- painting
- craft
- Play-Doh
- reading
- small world
- number activities
- computers



When you want to play outside, we have lots more activities for you, including:

- trikes
- scooters
- climbing frame
- sand
- water
- mud kitchen



What happens when I get hungry or thirsty?

In the morning, you can have a drink of milk or water and a piece of fruit.

At lunchtime, you will go to the school hall with your friends.

Kind adults will look after you. A midday assistant is showing Levi what his grown-ups have chosen for him.

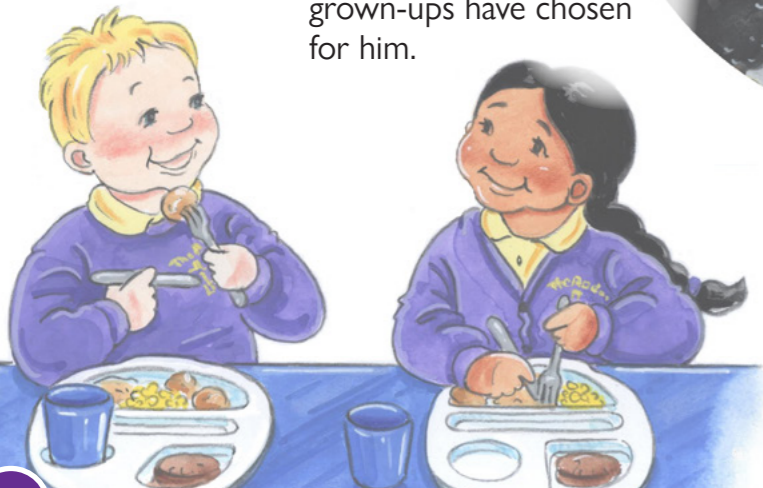


“Thank you for helping me,” Levi says.

You will sit down and eat your food next to your friends. If you have a packed lunch, you will eat in the hall as well.

“I have practised using my knife and fork all by myself,” says Jack.

“So have I,” says Hinaa.



6 What is your favourite meal?

What if I need to go to the toilet?

You can go to the toilet when you need to, but if you are working with your teacher, it is polite to ask them if you can go.

Hinaa has practised going to the toilet by herself, so she doesn't need any help today.

“My teacher has said that I just need to ask if I need help or have an accident,” she says.

“I will make sure I wash my hands when I have finished!”



Can you go to the toilet by yourself?

7

At the end of every school day, your grown-ups will collect you and you can tell them about your brilliant day at The Redeemer Church of England Primary School. Levi, Jack and Hinaa love coming to The Redeemer Church of England Primary School!



The Redeemer Church of England Primary School
Jack Walker Way, Blackburn, BB2 4JJ

Tel: 01254 296400

Email: office@theredeemer.blackburn.sch.uk

Web: www.theredeemercep.co.uk

As a unique part of God's diverse family, we will live out our Redeemer values, nurturing all to become the best they can be. Together, we will help each child learn that, through believing, loving, caring, sharing everyone will grow in the Light of Christ.