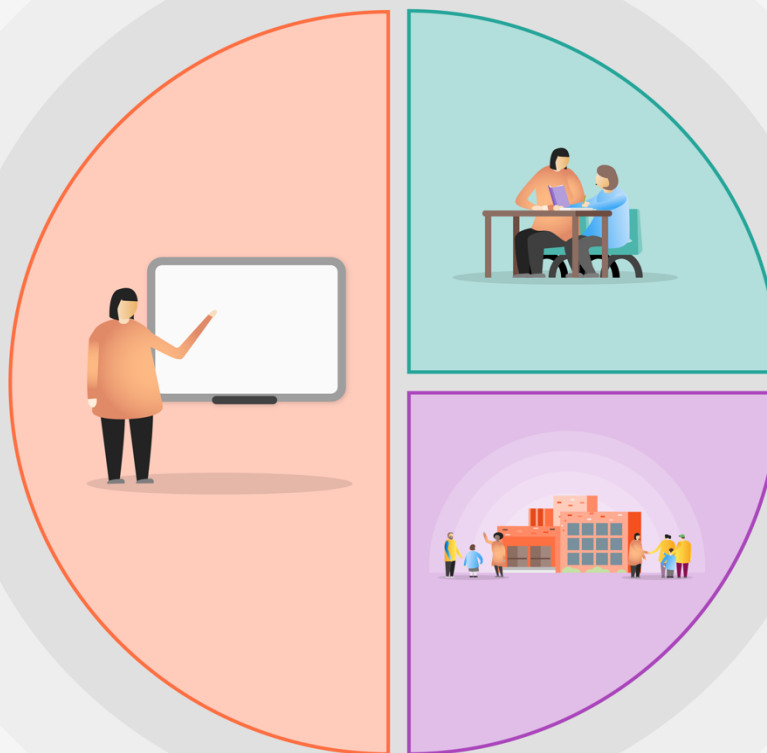




1 Teaching

- Pupils will have a wider choice of books and pitched at their reading/phonic level. Develop reading stamina.
- Oxford virtual library purchased and engagement monitored ½ termly.
- Teaching blended to support home learning and isolation.
- Subject leaders and phase leaders to ensure teachers have secure subject knowledge.
- Metacognition, flexible grouping and first quality teaching.
- Maths – White Rose support available for teaching/remote learning.
- Phonics training for teachers resulting for children with higher starting points and who will make at least expected progress.
- Half- termly monitoring through deep and shallow dives to measure impact and curriculum coverage across the schools teaching and learning landscape.
- Termly progress meetings focusing on curriculum knowledge gains and raising achievement.
- Development of oracy/Voice 21 strategies to support learning throughout school.



2 Targeted academic support

- SEND specific training for teachers where pupils have identified needs. SEMH, SALT, SPLD, MLD
- 1:1 and group catch-up to identified children.
- Vocabulary, fluency and PS development for all pupils.
- Small group teaching and support
- Early Carer support for teaches
- Identified booster/targeted support before and after school
- SEND and Behaviour Review
- NELI language support for EYFS

3 Wider strategies

- Absence management for persistent absentees. School will continue to maintain an attendance above 97%.
- Wellbeing support for children identified from our pandemic register. Group and individual
- Family support worker to provide support for parents accessing work.
- Continue outdoor enhancements for children
- Therapeutic support available 1x weekly
- Nurture provision/family well-being support in school and remotely